

Utopia Gymnastics Accessibility Guidance

Utopia Gymnastics



Units 1&2 Prince of Wales Mill
Birds Royd Lane
Brighouse
HD6 1LQ

01484 717428

info@utopiagymnastics.co.uk

www.utopiagymnastics.co.uk

Version 1 - 09/2018

Opening Times

Opening times vary according to classes/events taking place. Please see the timetable on our website.

Location

- There are bus stops within 150m of the site on Huddersfield Road.
- The bus station is 500m away down Huddersfield Road in Brighouse town centre.
- The nearest railway station is Brighouse 80m from the venue.

Car Parking and Drop-Off

- Parking is free for all users.

- Vehicle and pedestrian entry to Utopia is from Birds Royd Lane into the small industrial park across the road from the railway station car park entrance. From the gate of the industrial park Utopia's building is obscured by Revolution Porsche's building.



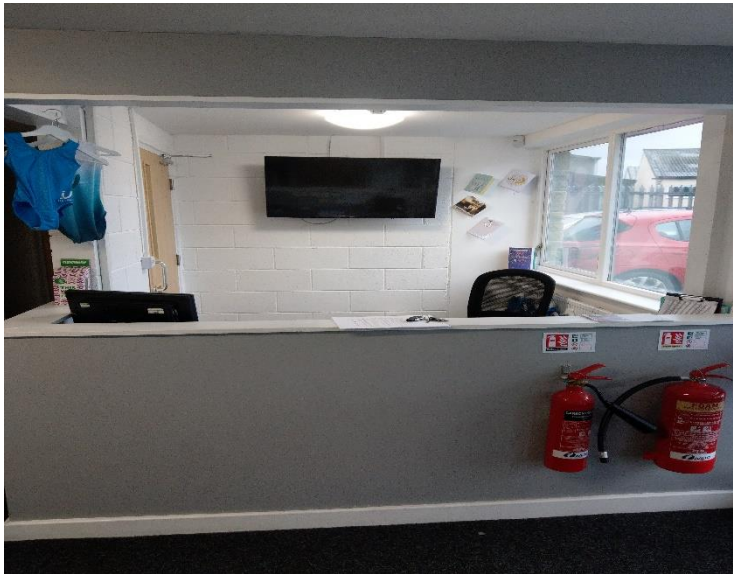
- The car park is open-air in Utopia signed bays on a smooth concrete surface.
- The car park and drop off point are in front of the main door.
- There is 1 blue badge parking space on the car park and it is not bookable in advance.
- The route from the car park to the entrance is wheelchair accessible.
- There is no road to cross between the car park and the entrance.
- The car park entrance does not have a height restriction barrier.
- The car park is at the front of the venue.



Outside Access (Main Entrance)

- The main entrance is at the front of the building on the car park.
- The main entrance has double doors into a vestibule and double doors into the reception.
- There is level access into the building over 2 small raised thresholds.
- All the doors open away from you (push).
- Both doors are double (with the right hand ones usually locked).
- The width of the door opening is 151cm.

Reception



- The reception counter is on the right next to the main entrance door.
- There is level access to the counter from the main entrance.
- The counter is 102cm high.
- The counter does not have a lower section.
- The lighting levels are bright.
- There is no hearing assistance system.
- Viewing of activity inside the gym for disabled visitors is provided in the reception area on a large TV screen.

Inside Access

- There is level access to all ground floor services.
- This venue does not play background music.
- Motorised scooters are not allowed in the building.
- The lighting levels are bright.

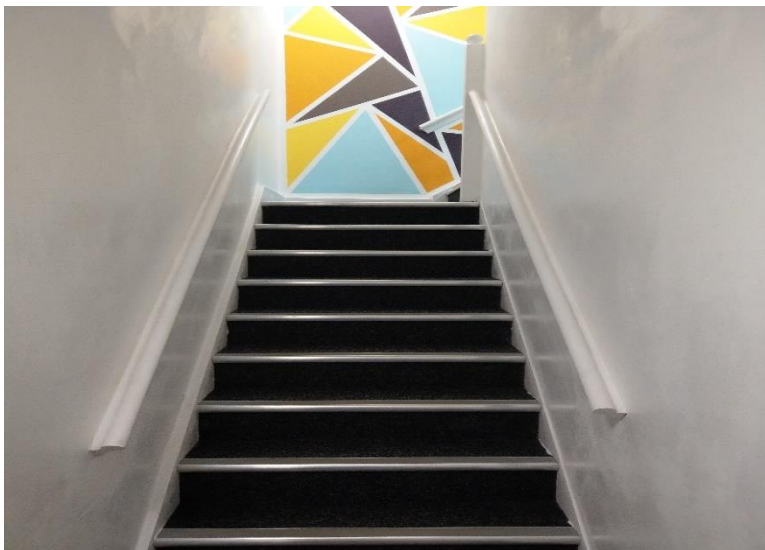
First Floor Eating, Drinking and Viewing Area



- The Utopia cafe and viewing area is on the first floor, accessed by the stairs located through the door opposite the reception desk.
- There is currently no lift or disabled access to the first floor facilities.
- Viewing of gym activity is via the 4 large TV screens on the café walls.
- Table service is not available.
- Hot drinks can be ordered from the service counter (height 91cm).
- There is a fridge containing snacks and cold drinks. Items can be purchased from reception or the counter.
- There is no lowered section at the counter.
- There is fixed seating to 2 walls.
- No tables are permanently fixed.
- No other chairs are permanently fixed.
- Some chairs are armchairs.

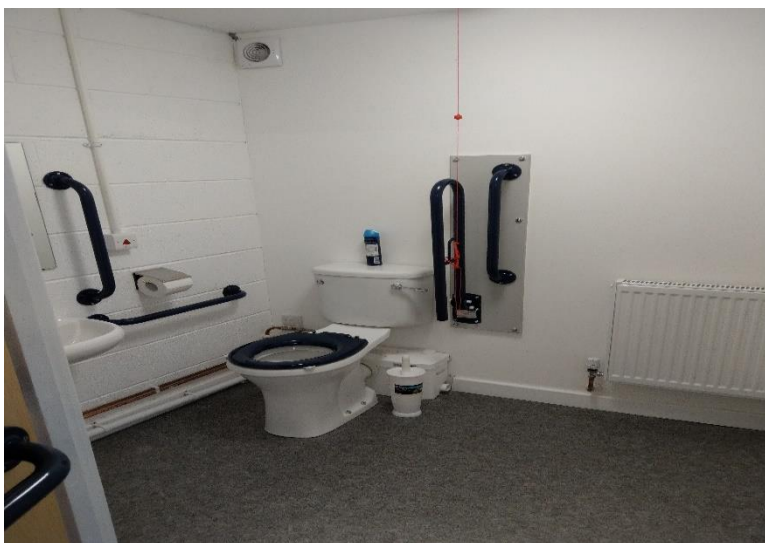
- The distance between the floor and the lowest table is 53cm.
- The distance between the floor and the highest table is 76cm.
- Plastic cups and drinking straws are available.
- Plastic / takeaway cutlery is not available.
- Single cubicle male and female toilets are available at the rear of the café.

Stairs to First Floor



- The stairs, accessible by the door opposite the reception desk, lead to the café and first floor viewing area.
- There is no disabled access to the first floor facilities.

Accessible Toilet



- There is a unisex accessible toilet and baby changing facilities in the reception area on ground floor.
- The toilet is not for the sole use of disabled people.
- There is appropriate signage on the outside of the toilet door.
- There is level access to the toilet.
- A key is not required for the toilet.
- The door opens outwards.
- The door is locked inside by a lever lock.
- The width of the accessible toilet door is 88cm.
- The door is not heavy.
- The dimensions of the accessible toilet are 177cm x 217cm.
- There is sufficient turning space for a wheelchair.
- There is a lateral transfer space of 140cm.
- As you face the toilet the transfer space is on the right.
- There is a dropdown rail.
- There is a lever flush on the transfer side.
- There is a functioning emergency alarm.
- Sanitary disposal facilities are provided.
- There are no coat hooks.
- Wall-mounted grab rails are available.
- There is no shelf within the accessible toilet.
- There is a mirror.
- The height of the toilet seat above floor level is 46cm.
- There is a hand dryer so no towel dispenser.
- There is a toilet roll holder reachable while seated on the toilet.
- There is a wash basin with a lever operated mixer tap (height 84cm).
- The wash basin can be reached from seated on the toilet.
- The contrast between the door and walls and the walls and the floor is good.
- The lighting levels are bright.

Access to the Gymnasium

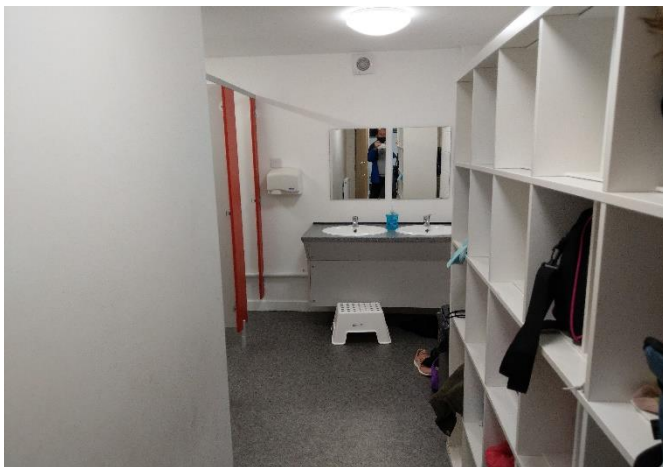
Access to the gym is through the door opposite the reception desk and a second door in front of you. Both doors are fire doors and must be kept shut.

Standard Changing Room and Toilets (Male) Ground Floor



- The changing room has one cubicle toilet and storage racks.
- The changing room is approximately 12m from the main entrance.
- The changing room is approximately 9m from the reception desk.
- The changing room is approximately 15m from the gymnastics area.
- There is level access to the changing room and toilet.
- Shower facilities are not available.

Standard Changing Room and Toilets (Female) Ground Floor



- The changing room has 3 cubicle toilets, sanitary disposal facilities and storage racks.

- The changing room is approximately 10m from the main entrance.
- The changing room is approximately 7m from the reception desk.
- The changing room is approximately 13m from the gymnastics area.
- There is level access to the changing room and the 3 toilets.
- Shower facilities are not available.
- Lighting levels are bright.

Additional Information

- Staff receive annual disability awareness/equality training.
- CCTV is in use throughout the building and car park.
- Documents are not available in Braille or large print.
- Smoking or vaping is not allowed inside the building or on areas of the car park outside.
- A bowl of water can be provided for an assistance dog.